

PROFAST

HARRISBURG | PITTSBURGH | PHILADELPHIA | BALTIMORE



**AUTHORIZED
LEADING EDGE
DEALER**

SAFETY EQUIPMENT



PROFASTINC.COM | 1.800.243.3418



3 Arrest/2 Restraint

COBRA CART™

If multiple workers on a jobsite require Personal Fall Arrest systems, the Cobra Cart™ Multi-Man is the solution. Cobra Cart™ offers workers OSHA compliant anchor points when doing leading-edge work.



1 Arrest/1 Restraint

LIFEPOINT™ DELUXE NON-PENETRATING

The LifePoint Deluxe is a mobile safety harness tie-off device that provides fall protection for two people: Fall Arrest for one and Fall Restraint for one, or Fall Restraint for two.



2 Arrest/2 Restraint

BADGER

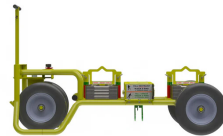
The Badger cart is an OSHA compliant mobile anchor point that can protect four workers at a time: two in fall arrest and two in restraint. It's the perfect solution for worker safety during commercial roofing projects.



3 Arrest/2 Restraint

TRIREX CART

The Trirex is easy to maneuver and can be moved quickly and easily from one work area to another.



2 Arrest/1 Restraint

SABER CART

(8) Removable 50 lb Ballast Weights, Integrated front axle, Flat-free Solid Polyurethane Tires, Patented Ratchet Locking Engagement Arm, Integrated fork pockets and lifting points.



2 Arrest

SAFETY BULL

Meet the Safety Bull - Smaller than the original TriRex™ and lighter than the Stinger™ the Safety Bull is our most versatile mobile fall protection unit.



3 Arrest/2 Restraint

PENETRATOR X3

The Penetrator X3 mobile fall protection system offers unparalleled portability while being the lightest system on the market at 425 lbs. The X3 lifts into place allowing the users to quickly snap in and get to work. When the work moves, the X3 by Tie Down and quickly be relocated.



5 Arrest/2 Restraint

PX5 SENTINEL

Fully portable mobile fall protection device with ample storage that offers 3 Fall Arrest and 2 Fall Restraint tie-downs. When you need a mobile fall protection device that can function on almost any surface, the new Penetrator Sentinel is the ultimate choice.



5 Arrest/2 Restraint

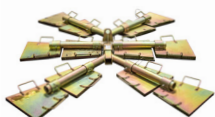
PENETRATOR X5

The revolutionary Penetrator X5 ships are ready to use and safely protect up to seven workers at a time. Weighing less than 600 lbs., the X5 provides fall arrest safety for five workers and an additional two workers in restraint, all at the same time. When it's time to relocate, our premium non-flat tires allow for quick relocation so our customers can resume their work without sacrificing productivity.

PERMANENT WEIGHTED ANCHORS

ANGEL ANCHOR SYSTEM

A versatile single tie-off point when penetrating the substrate is not an option. A modular design makes it easy to transport and assemble and allows for the anchor to be used on surfaces up to a 5° slope.



16 PLATE HIPPO ANCHOR

The Hippo Anchor by Tie Down Safety is a deadweight anchor system that sits on the top of a roof without penetration. The heavy anchor weight design makes this an ideal fall arrest or restraint system.

GARLOCK SAFETY SYSTEMS

FIT-RITE™ SAFETY RAIL

Custom perimeter safety rail just got easier with RailGuard™ Fit-Rite™ railing systems. The latest in passive fall protection from Garlock offers complete customization to fit any rooftop, mezzanine or loading dock. Fit-Rite Can be used in flat roofing, Metal Roofs and interior plant.

Design and CAD Drawings Available

- Available in Galvanized or painted
- Straight or Curved Stanchions
- Multiple connection fittings
- Self-closing gates
- 10' or 21' lengths
- Non-Penetrating Safety Guardrail System
- Meets OSHA Requirements
- 1910.29(b) and 1926.502(b)



GARLOCK SAFETY SYSTEMS

RAILGUARD 200™ SAFETY GUARDRAIL

RailGuard 200 Exceeds OSHA requirements for temporary and permanent guardrail applications. With its Non-penetrating design, it allows for the protection of the worker with out compromising the waterproof integrity of the roof system.

Available in both Standard sizes and custom size
Options Include: Base transporter, Galvanized or Painted base and Rails, Toeboards, Gates
To Find available colors go to www.ralcolor.com

Design and CAD Drawings Available

- Non-Penetrating Safety Guardrail System
- Meets OSHA Requirements
- 1910.29(b) and 1926.502(b)



GARLOCK SAFETY SYSTEMS

SET AND PREVENT™ RAILGUARD 200™ BASE

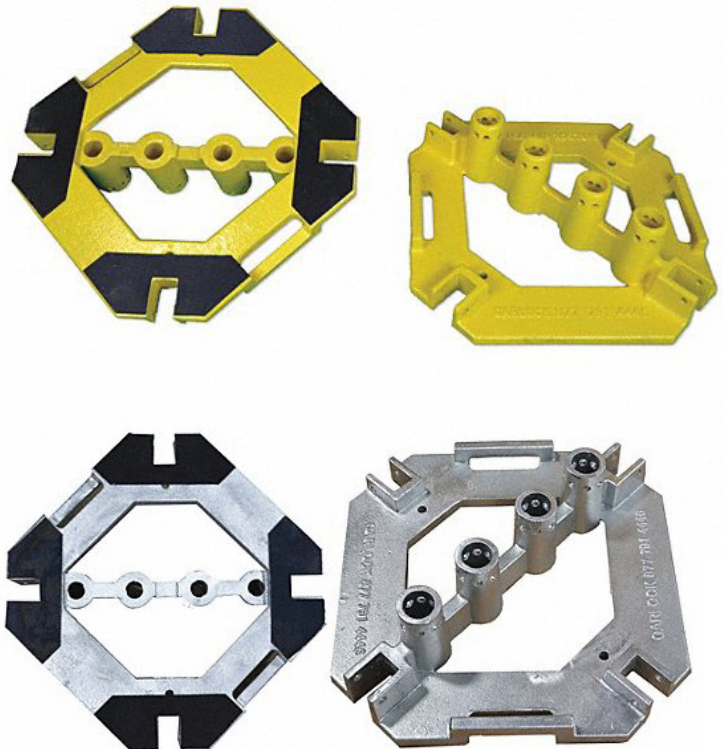
- Non-penetrating design maintains the watertight integrity of the roof.
- Accepts an inexpensive form-fitting rubber pad for delicate roofs.
- Heavy-duty steel insert with galvanized plating for long term durability and value.
- Dual 3/8" lifting handles for ease of use.
- Compatible with our current base transporter for
- Dual post design for straight runs, square corners, and diagonal corners. easy moving and positioning.
- Internally reinforced with rebar for long term durability.



GARLOCK SAFETY SYSTEMS

STANDARD GUARDRAIL BASE

- Standard padded base for use with Garlock RailGuard 200 system
- OSHA 1926.502(f)(2) compliant
- Available in powder-coated yellow and galvanized

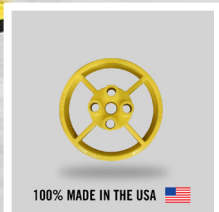
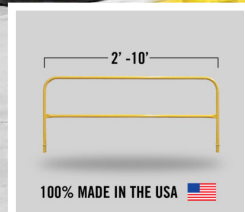


WE ARE NOW AUTHORIZED DEALERS FOR



Counterbalance • The Physics of Cantilever Design.

Modular and durable, our component-based solution uses counter-weight engineering. The simple cantilever principle provides unrivalled strength and safety. The heavy-duty KeeGuard bases are manufactured using molded, 100% recycled PVC. Each 30 pound base is positioned at specific intervals to create a stable, protective barrier on the rooftop.



SAFETY GATES



ADJUSTABLE SELF CLOSING GATES

OSHA Compliant gates that protect workers from falls, or limit access to hazardous areas.

Fits Openings: 17"-48" Wide
Universal Mount System, mounts to 1" or 2" round or square posts, wall mounts
Options: Galvanized or Safety Yellow



FREESTANDING SWING GATES

Swing gates from 4' to 12' wide used in conjunction with RailGuard 200™ systems. Meets all OSHA standards. Available in powder coat or galvanized finished.



SENTRYGUARD™ GATES

Fall prevention gate to protect open loading docks, stairwells, shipping pits, limiting access, and more. Easy operation and OSHA compliant.

HATCH/LADDER PROTECTION



HATCHPROTECTOR™

The HatchProtector™ mounts directly to the roof hatch with a compression fit design, offering a quick and reliable roof hatch guard system.



LADDERGUARD™

Fastest, easiest, and most affordable way to create a safety egress and ingress zone to guard rooftop ladder access starting 6 ft. from leading edge.



ROOF HATCH SAFETY RAILING

Babcock-Davis' OSHA compliant Safety Railing is ideal for new and retrofit applications. The safety railing mounts to the existing roof hatch curb counterflash without penetrating the membrane.



LADDER SAFETY POST

The Safety Post is designed in compliance to OSHA to extend 42 inches above a landing platform to provide safe ladder access through a roof hatch or floor door. The spring assisted telescoping design mounts to the top two rungs of a fixed vertical ladder.



SAFE-T™ LADDER EXTENSION SYSTEM

Designed to attach over the top of the ladder and provide a safe and easy transition from the ladder to a second surface.



SAFE-T™ SELF CLOSING LADDER GATE

The Safe-T Ladder Gate, designed for use in combination with the Safe-T Ladder Extension, is perfect for providing additional protection when climbing off or onto a ladder.



EDGE PROTECTION



PERIMETER CLAMP SYSTEM

OSHA compliant leading edge fall protection system that can be used on both flat edge surfaces and parapet walls. (2x4s not included).



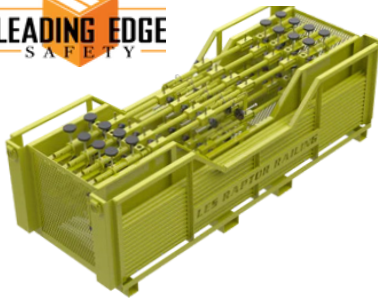
SLABGRABBER™ PERIMETER CLAMP

The SlabGrabber Guardrail Clamp is the latest from Garlock Safety Systems for Perimeter Fall Protection. Can grab a concrete slab with a thickness range of 2" to 24"



TURBORAIL™

The premier leading edge rail protection system with heavy-duty steel clamps, stanchions and snap on horizontal rails, offers a warning line system that provides perimeter fall protection for all industrial workspaces.



ALL-IN-ONE GUARDRAIL SYSTEM

The All-In-One guardrail is a versatile, easy-to-use, and adjustable temporary guardrail system that is suitable for a variety of surfaces. It can be installed on flat/low edges, over gravel stops, on parapet walls, and on concrete slab overhangs.



RAPTOR RAIL GUARDRAIL SYSTEM

Raptor Rail Guardrail System, for temporary safety on construction sites, rooftops, and more. This guardrail system combines easy setup with adjustable rail heights, swiveling base posts, and quick-release rails for unmatched convenience.



ZIPRAIL™ KIT

This comprehensive package contains everything you need to establish a robust secure fall protection system, eliminating the hassle of sourcing individual components. The ZipRail Complete Kit is designed for easy setup on various structures, whether a parapet walls or flat edges.

KATTSAFE SAFETY RAIL AVAILABLE

GR34 NON-PENETRATING GUARDRAIL SYSTEM

The GR34 Non-Penetrating Guardrail system Provides the highest level of passive safety for membrane and built up systems. The GR34 guardrail features a plastic coated, steel weighted base that sits up top of the roofing membrane resulting in a completely freestanding system that is OSHA compliant. GR34 bases and posts are positioned a maximum of 10 feet on center

KEY FEATURES

- Manufactured of high tensile aluminum
- Modular system facilitates infinite configurations.
- Can be easily customized on site to suit application.
- OSHA Compliant.



CROSSOVER STAIRS



CROSSOVER STAIRS

36" wide stairs can range from a single step up to seven steps before a connection is required to a work platform.



MODULAR CROSSOVER STAIRS

Our modular crossover stairs system allows workers to safely navigate over obstacles that would otherwise put workers at risk for injury. Modular stair components can easily be configured into a wide variety of heights, lengths, access points and levels, and can be installed freestanding or mechanically attached to the roofing or flooring substrate. A perfect solution for changing needs and dynamic environments



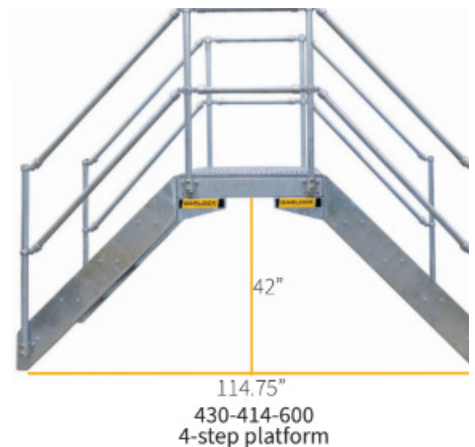
KC103 CROSSOVER STAIR SYSTEM

The KC103 aluminum crossover system is used for safe access over pipes, expansion joints, and equipment or up to elevated areas. Kattsafe KC103 crossover systems available as standard with a 3ft x 3ft platform and configurations to clear varying heights from 25in up to 73in.



KEE WALK® ROOFTOP CROSSOVERS

Roof surfaces can be extremely dangerous places to work, but not if Kee Walk® is installed. It provides a safe, anti-slip, level walking surface to access areas of the roof and to safely walk across it. Step sections are adjustable and can be used on sloped roofs too. Added to this, it also protects the roof sheet from foot traffic.



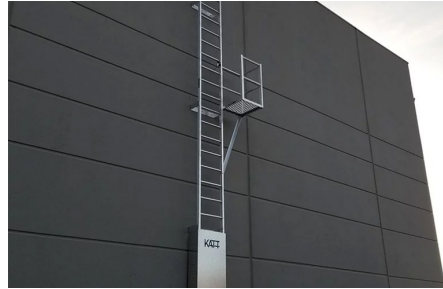
FIXED LADDERS

Kattsafe



RL20 ANGELED FIXED LADDER

Angeled fixed ladders are specifically suited for small elevation changes. We have several options to fit different spaces. Angeled fixed ladders are ergonomically sound, and they provide easy access to elevated surfaces such as roofs and platforms.



RL30 SERIES VERTICAL FIXED LADDERS

The RL30 series fixed ladders feature modular construction for flexibility. Each includes 1 1/4-inch serrated rungs welded to the stiles and ladder bodies connected with splice joints.



RL40 CAGED FIXED LADDERS

Kattsafe caged fixed ladders are available in a variety of kits to suit different applications. Various options are available for these modular, aluminium access ladder systems to ensure every need or safety standard can be met.



FIXED STEEL LADDER - SAFETY YELLOW

Side Rails 2-1/2" x 3/8" flat bar, Solid round 3/4" rungs, 12" spacing between rungs, 18" Ladder width, Safety yellow finish, Complies with applicable OSHA & ANSI standards.



FIXED STEEL LADDER

Solid round 3/4" rungs, 12" Spacing between rungs, 18" Ladder width, 42" Guardrails on Walk-Thru models, Powder coat gray finish, Complies with applicable OSHA & ANSI standards.

**SRC TUBULAR RAIL
FIXED LADDER**

**400445
LADDER**

**400459
EXTENSION**



SAFETY RAIL CO.
THE SAFEST

400445	ROUND TUBULAR LADDER UP TO 10FT TALL (5' MINIMUM PRICE)
400459	LADDER EXTENSION KIT 1FT-10FT (SOLD PER FOOT)



KEE WALK ROOFTOP WALKWAY

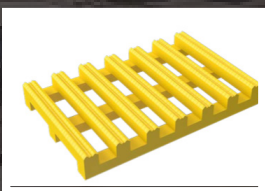
Kee Walk® provides a safe, anti-slip, level walkway for workers who need to access a roof in the course of their work. Its intelligent design protects the roof surface from unnecessary damage and integrates easily with either guardrails or lifeline systems.



Kattsafe

KATTSAFE WALKWAYS

Our walkways are designed to offer a clear, designated path of access to avoid unintentional access to unsafe areas. They are ideal in combination with Kattsafe guardrail systems and are the preferred method of safe access across roofs and areas close to a fall edge.



FLEXIBLE WALKWAY MATTING

A roll flat solution that is minimum fuss to use, keep employees safe, and protects the integrity of the roof.



ALUMINUM WALKWAY SYSTEMS

Lightweight non-corrosive walkway system which provides safe, designated access around the rooftop.



ALUMINUM WALKWAY SYSTEMS W/ GUARDRAIL

Designed for safety and flexibility. Can be leveled to accommodate for roof slope, and seamlessly combined with our guardrail systems.

WARNING LINES



EVERLAST™ 300 WARNING LINES

A permanent warning system with heavy-duty RailGuard™ 200 metal bases, plastic-coated cable, and plastic pennants.



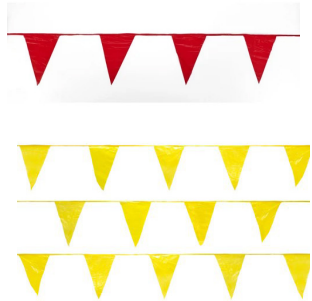
PERMANENT WARNING LINE

The aluminum warning pendants contain the word "DANGER". This warning line system provides a permanent but simple solution for unprotected edges for irregular work in a facility or rooftop.



PERIMETER DEFENDER CONE

OSHA Compliant Cone and Base is the perfect solution for the temporary deployment of warning line system during roofing or construction projects.



OSHA PERIMETER MARKER FLAGS

Yellow or Red Color, 105' Long, OSHA compliant



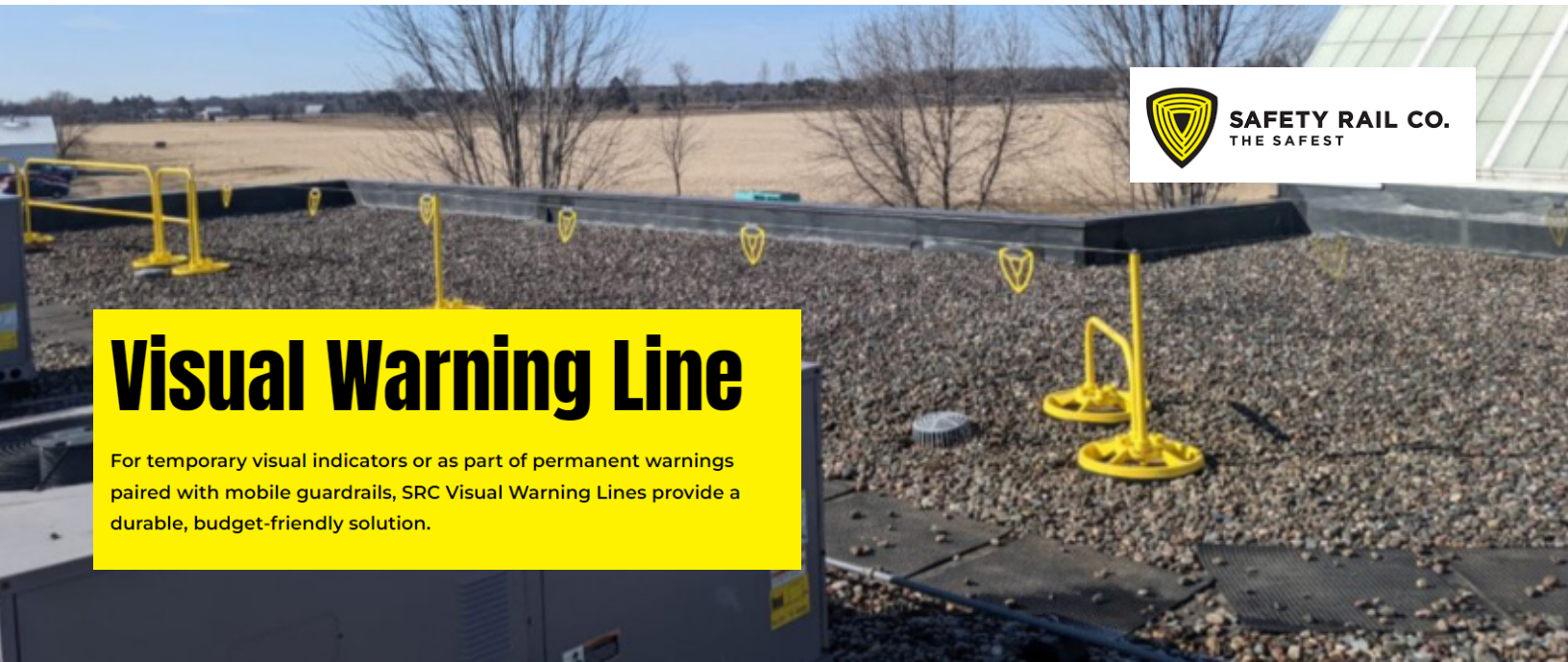
SAFETY BOOT

The Safety Boot Guardrail System has been tested by an independent third party engineering firm as exceeding all applicable United States Federal OSHA guardrail regulations and requirements in order to assure compliance.



RED DANGER DO NOT ENTER / YELLOW CAUTION TAPE

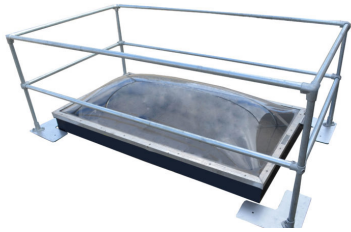
Tape 3" x 1000Feet, Tear Resistant Design



Visual Warning Line

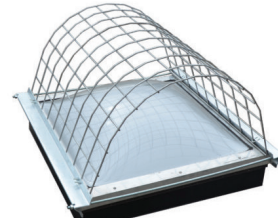
For temporary visual indicators or as part of permanent warnings paired with mobile guardrails, SRC Visual Warning Lines provide a durable, budget-friendly solution.

PERMANENT



SKYGUARD™ PROTECTION SYSTEM

Modular OSHA compliant fall protection skylight system that works best for large and tall skylights and smoke hatches.



SCREENGUARD™ SKYLIGHT COVERS

ScreenGuard™ skylight covers provide a cost-effective, OSHA compliant fall protection solution that secures to the skylight frame with compression fit - no penetrating fasteners, adhesive or straps. Galvanized screen resists corrosion.

TEMPORARY



PORTABLE SKYLIGHT NET

Portable Skylight Nets are made of high tenacity 4" polypropylene knot-less nets and are used during new construction, renovation, and maintenance roof work as a form of personal fall protection where skylights are present.

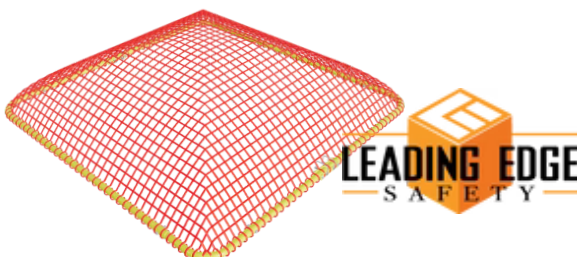
MOBILE SKYLIGHT PROTECTION SYSTEM

MOBI Skylight Netting is a multi-functional, durable, and easy to set-up piece of fall protection equipment. Once it is installed over a skylight, it functions as a fall prevention system, protecting workers in the event of a fall onto a skylight.



COLLAPSIBLE SKYNET

The Collapsible SKYNET is a skylight fall protection system designed to protect workers from falls to the surface below. With a hinged steel frame and oversized netting coated with a Mil-spec UV coating for added protection, it provides an easily transportable and secure, reliable barrier with a expected life span of 5 years.





Class 1 identifies SRLs that are used only on overhead anchorages and are subjected to a max free fall of 2 feet or less. Class 2 SRLs can be used in applications where overhead anchorages may not be accessible and a structural edge is used instead; these can withstand a free fall of no more than 6 feet over an edge.

RETRACTABLES



FALLTECH®

CONTRACTOR CLASS 2 SRL

New Class 2 Leading Edge SRL engineered for those who require the optimal balance of compliance, safety, and worker efficiency when working at height.

Sizes: 20', 30', 60'



FALLTECH®
DURATECH®

MINI PERSONAL SRL

May be anchored up to 5' below the dorsal D-ring for user's weighing up to 310 lb max.

Sizes: 6' 9' 30' 50'



FALLTECH®

CONTRACTOR SRL

30' galvanized cable and anchorage carabiner. 3/16" galvanized steel cable lifeline with load-indicating swivel snap hook.

Sizes: 20', 30', 50', 100'



FALLTECH®

CONTRACTOR LEADING EDGE SRL

7/32" galvanized steel cable lifeline with load-indicating swivel snap hook. Internal inertial braking system provides positive stopping action and uniform deceleration.

Sizes: 30', 50'



SAFEWAZE

NORTHSTAR CLASSIC SRL

Self Retracting Lifelines with specialized impact resistant housing and non-corrosive components. Also features an enhanced swivel top load indicating snap hook and fast-acting braking system.

Sizes: 20', 30', 50', 65'

HARNESSES

NEW ARRIVAL!

FALLTECH®



FT IRON 3D®

- New ergonomic lateral leg straps and construction greatly improve comfort and mobility.
- Rugged waist belt supports extreme loads of tools or equipment without folding while distributing load evenly for improved comfort
- Reinforced sub-pelvic strap features durable wear pad for extended product service life
- New ArrowGrip dorsal D-ring plate minimizes slippage for comfort and minimal adjustment
- Features integral tri-layer padded shoulder yoke to provide breathable user comfort
- Updated SRL connection point for fast, hassle-free attachment of all types of single and twin SRLs
- Quick-connect chest buckle features visual indicator showing positive connection
- Tongue buckle legs are equipped with 9 grommeted adjustment positions for a wider range of fit
- Fully adjustable suspension trauma relief system
- Complies with ANSI Z359.11-2014



FALLTECH®

CONTRACTOR 1D STANDARD NON-BELTED FULL BODY HARNESS

- Dorsal attachment sleeve supports effortless addition of personal SRLs
- Plated alloy steel low-profile spring tension roller torso adjusters.
- Breathable padded air-mesh shoulder yoke delivers added user comfort
- Paired lanyard parking keepers Plated alloy steel dorsal, sternal D-rings with mating buckle chest and tongue buckle leg closures
- Outfitted with 9 grommeted leg adjustment positions for a wider range of fit
- Complies with ANSI Z359.11-2014



NEW ARRIVAL!



SAFEWAZE

PRO FULL BODY HARNESS: 1D, MB CHEST, FD, TB LEGS

- Dorsal D-ring
- Friction buckle torso adjusters
- Mating buckle chest
- Front D-ring
- Tongue buckle legs
- Shoulder pad

ROPE & LANYARDS



8259

6' Internal Energy Absorbing Lanyard, Single-leg with Steel Snap Hooks.



8259Y3

6' Internal Energy Absorbing Lanyard, Double-leg with Steel Connectors.



8256

6' ViewPack® Energy Absorbing Lanyard, Single-leg with Steel Snap Hooks.



8256LT

6' Soft Pack FT Basic® Energy Absorbing Lanyard, Single-leg with Steel Snap Hooks.



8256LT3

6' Soft Pack FT Basic® Energy Absorbing Lanyard, Single-leg with Steel Connectors.

HORIZONTAL LINES



100' 4-PERSON TEMP ROPE HLL SYSTEM

High-strength, durable 5/8" double braid polyester rope lifeline with steel thimble and stitched end-termination.



60' TEMPORARY ROPE HLL SYSTEM; 2-PERSON WITH KERNMANTLE ROPE

Features 11/16" solid-core nylon kernmantle rope with one sewn and thimbled end-termination



DORSAL D-RING EXTENDER WITH STEEL SNAP HOOK



QUADRANT RETRACTABLE HLL

The Quadrant Retractable HLL offers the ultimate in jobsite flexibility as a temporary 2-person HLL system. The versatile length up to 65' allows use in a wide range of environments with a user-friendly setup in seconds plus no-hassle storage of the durable cable lifeline with protective housing.



6' LEADING EDGE CABLE ENERGY ABSORBING LANYARD

FALLTECH®

CONCRETE



7451A

Rotating D-ring Anchor with Concrete Screw



7440

Expansion Wedge Anchor for Concrete, 5,000 lb

STEEL



8256

Bolt-on D-ring Anchor with Installation Plate



8256LT

14 1/2" Trailing Beam Anchor with Dual-clamp Adjustment

ROOFING



7444

Single-use Wood Roof Ridge Anchor



7410

Hinged Reusable Wood Roof Anchor



7410M

Hinged Reusable Anchor for Steel Deck and Metal Roofing



7493A

Reusable Heavy Duty Chain Anchor for Wood

FALLTECH®



PITCH PRO

The PitchPro is a premier fall protection anchor designed for sloped-roof asphalt shingle construction.



STANDING SEAM ROOF ANCHOR

The Standing Seam Roof Anchor is a compact non-penetrating roof anchor designed for use on sloped or flat standing seam roofs.



ADJUSTABLE PARAPET WALL ANCHOR

No tools required with simple clamp-on non-penetrating installation. Adjusts to fit parapets from 1/2" to 15" thick and having a minimum height of 9"



PASS-THROUGH CHOKER ANCHOR

Features 1-3/4" load-bearing web with 3" wide full-length wear pad for abrasion resistance. Appropriately sized alloy steel D-rings provide simple pass-through choke-on installation. Sizes: 3',6',8',10',12'

PERMANENT

TIE DOWN
MANUFACTURING INGENUITY

COMMERCIAL ROOF ANCHOR-12

Commercial Roof Anchor Series are perhaps the most proven fall protection anchors on the market. Commercial Roof Anchors are compatible for installation onto wood, steel, and concrete substrates (fasteners are included for wood and steel applications).



TIE DOWN
MANUFACTURING INGENUITY

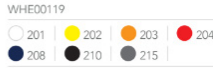
COMMERCIAL ROOF ANCHOR-18 (WOOD AND METAL DECK)

Commercial Roof Anchor Series are perhaps the most proven fall protection anchors on the market. Commercial Roof Anchors are compatible for installation onto wood and steel (fasteners are included).



NEW PRODUCT PRIMERO AIR

KASK



MATERIAL
EXTERNAL SHELL:
HD Polypropylene

INTERNAL SHELL:
HD Expanded Polystyrene

HEADBAND:
Soft PA Nylon



SIZE
One size fits most



WEIGHT
0.97 lb



STANDARD
ANSI Z89.1 TYPE I - CLASS C HT LT
EN 12492

Protection against side, front
and rear impacts
Shock energy absorption capacity
(Clauses 4.2.1.2 - front,
4.2.1.3 - lateral, 4.2.1.4 - rear)
Penetration (Clause 4.2.2)
Retention system strength
(Clause 4.2.3)
Retention system effectiveness
(Clause 4.2.4)



TEMPERATURE OF USE
-22°F / +140°F

ZENITH X2 AIR



SUPERPLASMA HD SAFETY HELMET



ZENITH X2 SAFETY HELMET



SAFEWAZE

V-LINE BUCKET ROOF KIT: FS99185-E HARNESS, 018-7005 VLL, FS870 ANCHOR

An economy collection of materials for roofing - harness, lifeline and anchor - conveniently packaged in a durable plastic bucket with lid.

- V-Line Full Body Harness FS99185-E
- 50' Vertical Lifeline Assembly 018-7005
- Reusable Roof Anchor FS870
- Plastic Bucket with Lid



SAFETY GLASSES



Grey



Clear

IPROTECT® SAFETY GLASSES

IPROTECT. 9.5 base curve offers great wrap around protection. No hard coating on lens. Polycarbonate lens offers 99% UV protection.



Clear

SPLASH GOGGLES

Splash protection goggle with polycarbonate lens. Uncoated lens. Vinyl frame with four indirect vents. Black strap masks grease and grime.



OCTANE® SAFETY GLASSES

One piece 8.5 base curve. Rubber inserts in temple offer extra hold. Hard coated lens offers 99% UV protection and scratch resistance. Includes lanyard. Colors: Camouflage, Black, and Red



ANTI-FOG TOWELETTES

Ideal for safety goggles, eyewear, welding hoods, etc. Reduces dust and finger prints. Does not contain acid, ammonia or abrasives. Wall mount or desk top. 7.25" x 5"

VESTS



BREAK-AWAY SAFETY VEST

ANSI 107 Type R, Class 2 5 Point Break-Away vest. 100% polyester mesh. Hook & loop front closure. 2 interior waist pockets. AwareLite reflective trim. Sizes: MD - 3X.



SURVEYOR'S SAFETY VEST

ANSI 107 Type R, Class 2 Surveyor vest. Solid front, mesh back. Zipper front. 1 split pad/pencil pocket, 1 radio pocket, 2 ext. waist pockets w/hook & loop closure, 2 open int. waist pockets, 1 int. flashlight pocket. Mic tabs. Sizes: MD - 3X.



REFLECTIVE SAFETY VEST

Adjustable hook and loop front closure. Elastic side straps. 1" reflective stripes on front and back. Does NOT Meet the requirements of ANSI/ISEA 107. Sizes: One size fits most.

HARD HATS



OMEGA II® CAP - RATCHET STYLE

Molded from high density polyethylene for maximum protection. Secure-Fit ratchet features an easy turn knob. Adjusts to over 40 different head sizes, 6.5 - 8 Made in USA and meets ANSI Z89.1 Type 1, Class C, E & G requirements



OMEGA II® FULL BRIM - RATCHET STYLE

Molded from high density polyethylene. Provides protection from sun and rain. Secure-Fit ratchet features an easy turn knob. Adjusts to head sizes, 6.5 - 8. Made in USA. Meets ANSI Z89.1 Type I, Class C, E & G requirements.

FIRST AID KITS



FIRST AID KIT WITH METAL BOX

Available in 10 & 25 person. ANSI Premium first aid kit. Meets ANSI Z308.1-2009.



FIRST AID KIT WITH PLASTIC BOX

Available in 10 & 25 person. ANSI first aid kit. Meets ANSI Z308.1-2009.

I.C.E. CART



I.C.E. EMERGENCY SAFETY CART

Includes: 24-piece First Aid Kit, Heat Stress Kit, 5-gallon Water Cooler, bloodborne Pathogen Kit, Single Eye Wash Station, and 6 ABC Dry Chemical Fire Extinguishers, providing all the essential safety components for your jobsite.



FOAM CORDED & CORDLESS EAR PLUGS

Non-allergenic foam ear plugs provide long term comfort. Convenient packaging for on-site distribution Each pair of plugs is individually wrapped.



FIRE EXTINGUISHER STAND

- Hole for water drainage to prevent water pooling and withstand all weather conditions.
- Rugged HDPE
- Stackable for easy storage
- Handles for easy set-up and removal
- Made in the USA
- **Fire Extinguisher sold separately**
- Can accommodate up to a 25 lb extinguisher

SHEILDS



PLASTIC VISOR CARRIER

Fits into helmet accessory slots. For use with all ERB shields except model #8170. Carrier has adjustable tension for raising shield when not in use. Fits Omega II, Americana and Liberty.

**Carrier Only. Hat sold separately*



CLEAR PC SHIELD .040

Clear polycarbonate shield. Size 7.75" x 15.5" .040 thick. Visor Carrier/Shield Compatibility: Fits E13, E14, E15, E16, E16R, E17, E18, E19, E20, and E21 carriers.



ALUMINUM BRACKET FOR OMEGA II®

Fits ERB Omega II helmet style. Deluxe aluminum construction. Adjustable tension. Shield, helmet and carrier sold separately. Meets ANSI Z87.1-High Impact when paired with 8150 shield.

**Bracket Only. Hat sold separately*

GLOVES



BROWN JERSEY (NO LINING)

Blend of approx. 70% cotton and 30% polyester. 1.6 oz., cleft cut with knit wrist.



LEATHER PALM WORK GLOVES

Unisex size large leather palm glove.



13 GAUGE NYLON KNIT SANDY FINISH

13 gauge gray nylon with spandex liner.



POSISHIELD™ 5MIL

Disposable Nitrile Glove, Powder Free with Textured Grip



POSISHIELD™ 7MIL

Disposable Nitrile Glove, Powder Free with Textured Grip



PIP®

Regular Weight Polyester/Cotton Jersey Glove with Fleece Lining - Red Knit Wrist



WEST CHESTER®

PVC Dipped Glove with Interlock Liner and Rough Finish - 12"



BOSS®

Seamless Knit Cotton/Polyester Glove with Textured Latex Grip - Medium Weight



BARRACUDA®

Seamless Knit HPPE Blended Glove with Polyurethane Coated Flat Grip on Palm & Fingers

CUT RESISTANT

NEW HIRE KIT



The ProFast New Hire Kit is a great way to get summer help and new hires the P.P.E they need without having to inventory individual SKU's of P.P.E. All of these P.P.E Products are shrink wrapped inside of the hard hat and ready to hand out at a moments notice.

PROFAST KIT INCLUDES:

OMEGA II® CAP



Molded from high density polyethylene for maximum protection. Secure-Fit ratchet features an easy turn knob. Adjusts to over 40 different head sizes, 6.5 - 8 Made in USA and meets ANSI Z89.1 Type 1, Class C, E & G requirements

IPROTECT® SAFETY GLASSES



IProTECT. 9.5 base curve offers great wrap around protection. No hard coating on lens. Polycarbonate lens offers 99% UV protection.

REFLECTIVE SAFETY VEST



Adjustable hook and loop front closure. Elastic side straps. 1" reflective stripes on front and back. Does NOT Meet the requirements of ANSI/ISEA 107. One size fits most.

FOAM CORDED EAR PLUG



Non-allergenic corded foam ear plugs provide long term comfort. Convenient packaging for on-site distribution Each pair of plugs is individually wrapped.

13 GAUGE NYLON KNIT SANDY FINISH



13 gauge gray nylon with spandex liner.



PROFAST

PROFASTINC.COM | 1.800.243.3418

PHILADELPHIA BRANCH

701a Ashland Ave. Bay 103
Folcroft, PA 19032
Phone: 610-521-3404
Fax: 610-521-4717

HARRISBURG BRANCH

7917 Derry St.
Harrisburg, PA 17111
Phone: 717-458-5610
Fax: 717-458-5613

PITTSBURGH BRANCH

770 Vista Park Dr.
Pittsburgh, PA 15205
Phone: 412-259-8449
Fax: 412-291-3188

BALTIMORE BRANCH

717 Hammonds Ferry Rd.
Linthicum Heights, MD 21090
Phone: 410-589-3369